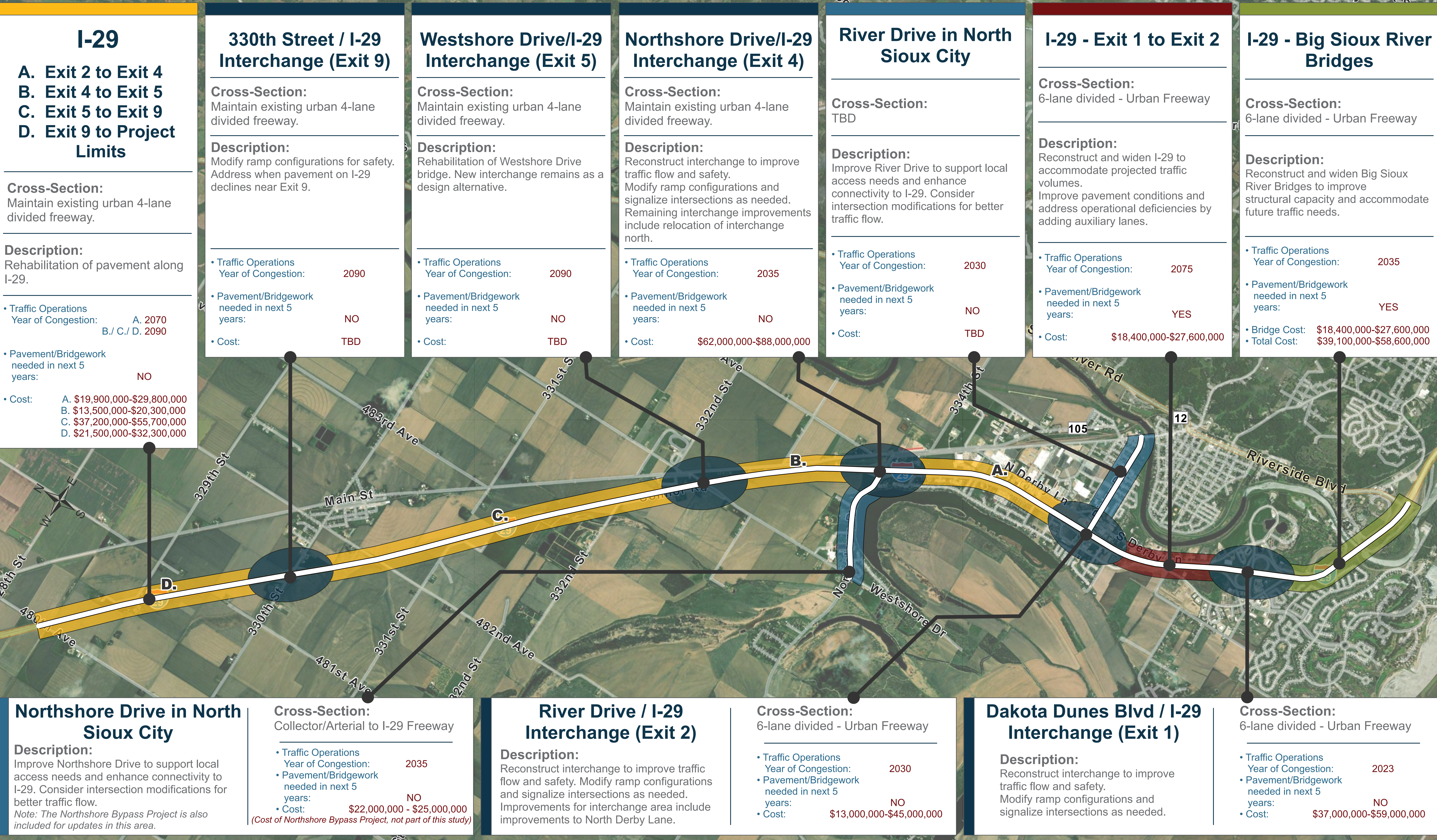
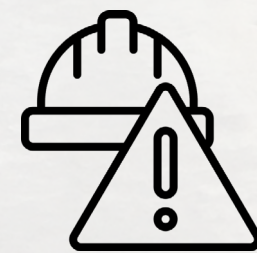
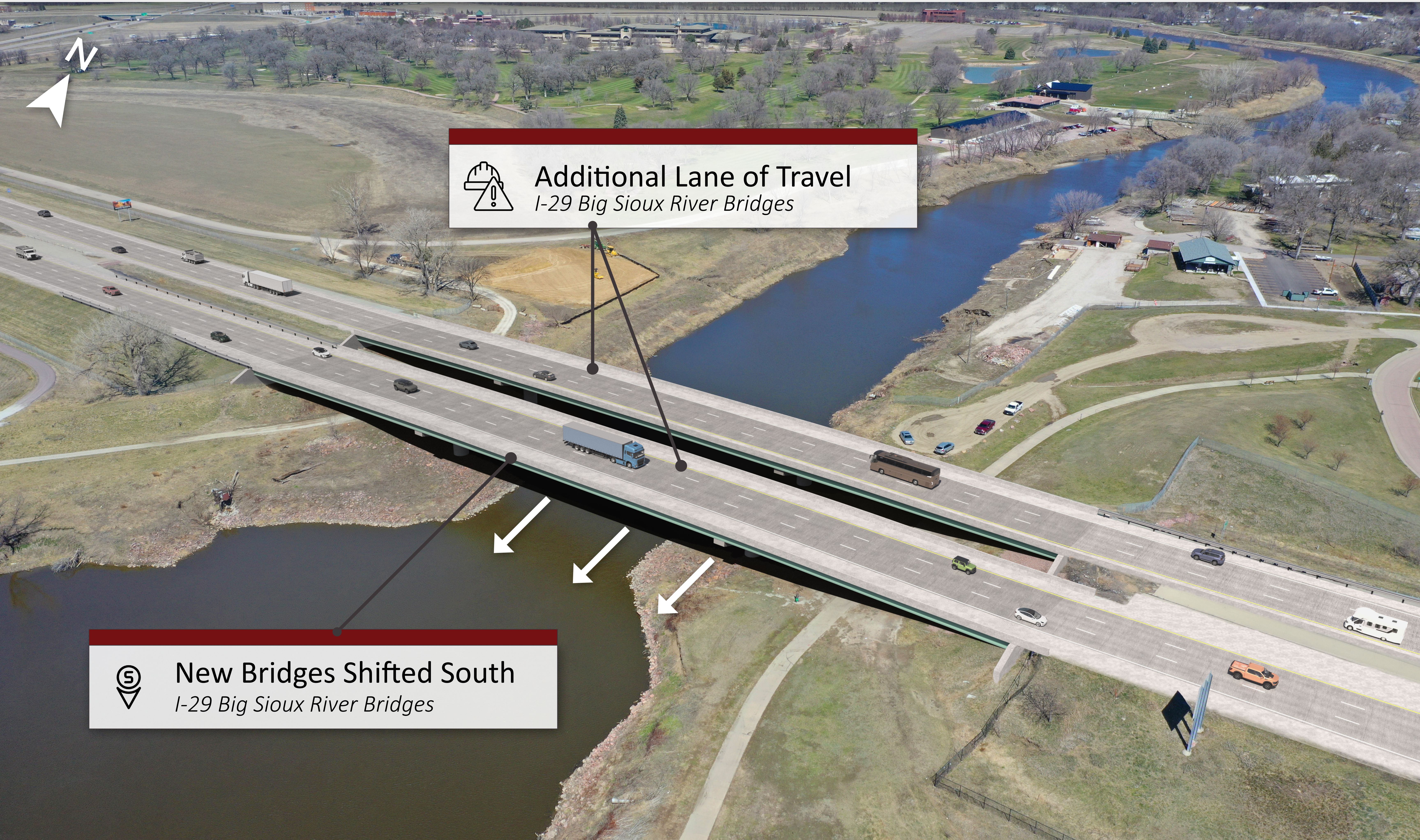


I-29 Project Programming



Big Sioux River Bridges



Additional Lane of Travel
I-29 Big Sioux River Bridges



New Bridges Shifted South
I-29 Big Sioux River Bridges

Exit 1 Dakota Dunes Boulevard

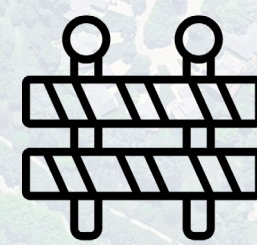


Traffic & Safety Issues
Dakota Dunes Boulevard & Sioux Point Road



Close Intersection Proximity

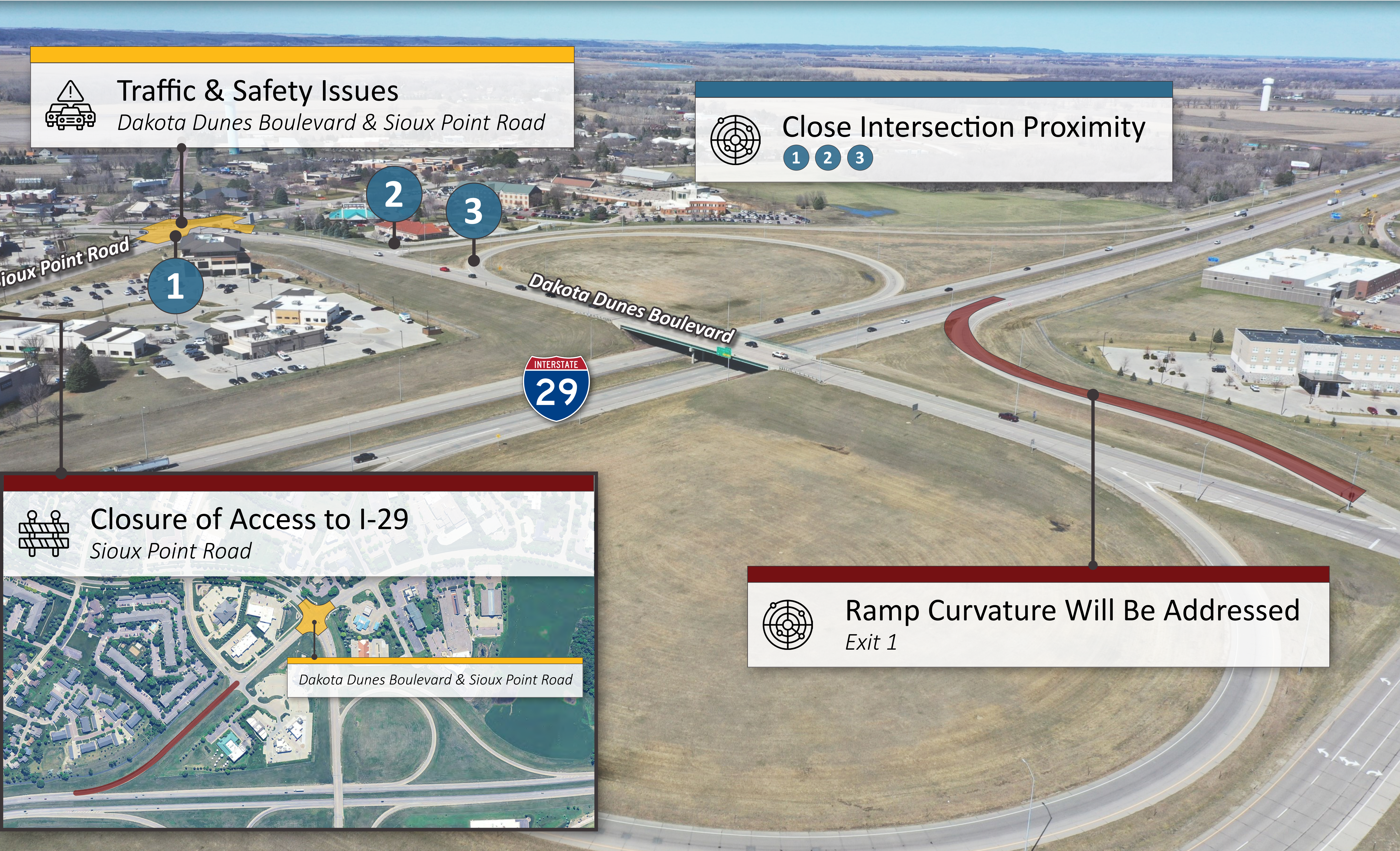
- 1
- 2
- 3



Closure of Access to I-29
Sioux Point Road



Ramp Curvature Will Be Addressed
Exit 1



Exit 2 River Drive



Close Intersection/Driveway Proximity

- 1 2 3 4 5 6



Traffic Operational Issues

River Drive & Southbound Terminal

3

River Drive

1

2

4

5

6



River Drive Expansion

New Bridge Structures



Exit 4 TBD



Northshore Bypass Project

Northshore Drive

Legend

On Alignment
Diamond

Relocated Diamond

Relocated
Diverging Diamond

Bridge Structure

NOTE:

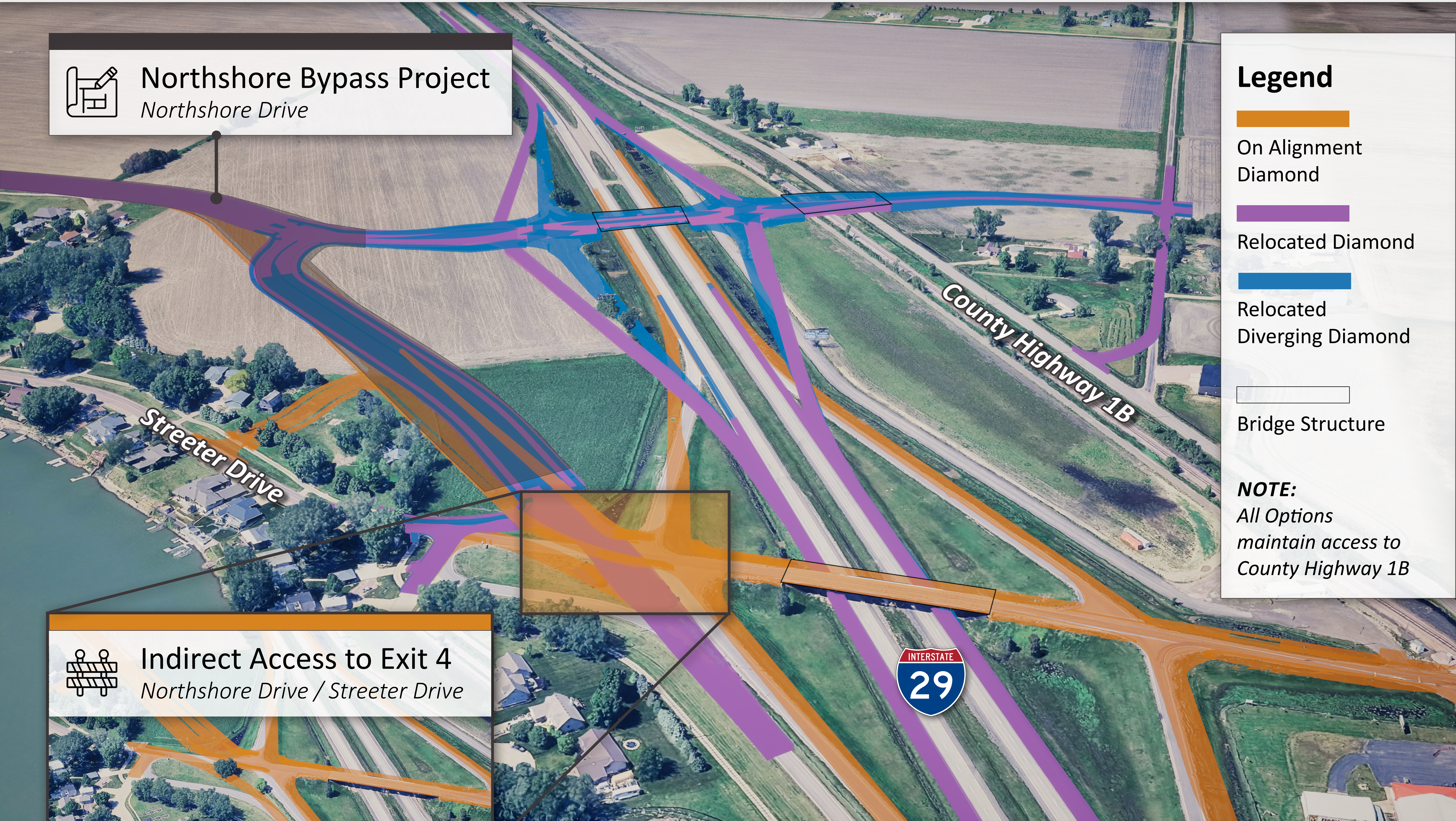
All Options
maintain access to
County Highway 1B



Indirect Access to Exit 4

Northshore Drive / Streeter Drive







**Scan this QR code to visit
the project website and view
the PowerPoint online**

<https://i29corridorsd.com/>